

# CONICAL E/C SAMPLING KIT

(ABSG019C-EC - 25mm)



**BISSON**  
THE PIPE FITTINGS EXPERTS

This Component is used when sampling in a chilled or cold store Environment. The capillary end cap is fed to one end of the pipe run, followed by a 2 meters of capillary 10mm OD nylon tube which links to the conical sampling head which is specially designed to operate in a chilled or cold stores. If ice were to form on the sampling head it forms on the beak, and does not cover the sampling hole allowing the system to continue to function normally.

## Installation Instructions:

Use the correct solvent Plusbond 3019. Do not paint. Keep pipe clean and free from dust. Do not install in direct sunlight. Only install with approved pipe. Do not use solvents to clean, only soapy water.

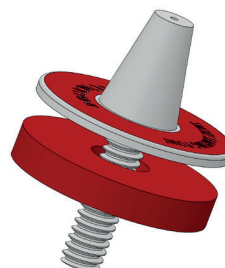
**PART NO.:**  
ABSG019C-EC -  
25mm

**FITTINGS  
COLOUR:**  
Grey

**DIAMETER  
TOLERANCE:**  
+ / - 0.15mm



**ABSG019C/HO CONICAL HEAD**  
**M16 Plastic NUT**



## RAW MATERIAL DATA

### Physical

Specific Gravity:  
Test Method ASTM D792

### Melt Mass - Flow Rate (MFR)

200C/5.0Kg 2.6g/10 min  
220C/10Kg 33g/10min  
Test Method ASTM D1238

### Moulding Shrinkage

Flow 0.0040 to 0.0070 in/in  
Test Method ASTM D955

### Mechanical

Tensile Strength  
Yield 5510psi 0.118 in (3.00mm)  
Tensile Elongation: 22%  
Break 0.118 IN (3.00mm)  
Test Method ASTM D638

### Flexural Modulus

284000psi 0.236 in (6.00mm)  
Test Method ASTM D790

### Flexural Strength

8390psi 0.236 in (6.00mm)  
Test Method ASTM D790

### Impact

Notched IZOD Impact  
73F (23C) 0.118 in (3.00mm)  
4.6ft-lb/in  
73F (23C) 0.236 in (6.00mm)  
3.3ft-lb/in  
Test Method ASTM D256

### Hardness

Rockwell Hardness (R-Scale)  
103  
Test Method ASTM D785

### Thermal

Deflection Temperature  
Under Load 264psi (1.8 MPa)  
Unannealed 181/83t  
Viscal Softening Temperature  
214/101t  
Test Method ASTM D1525

### Flamability

Flame Rating  
0.0630 in 1.60mm HB  
Test Method UL94

