

FLUSH SAMPLING KIT

(RPVCO19F - 25mm)



BISSON
THE PIPE FITTINGS EXPERTS

Used when the aspirating pipework is above a suspended ceiling, the flush head is fed to the ceiling tile with the supplied nut and linked to the pipework using a two meter length of 10mm OD tubing and a capillary T piece which links into the pipe.

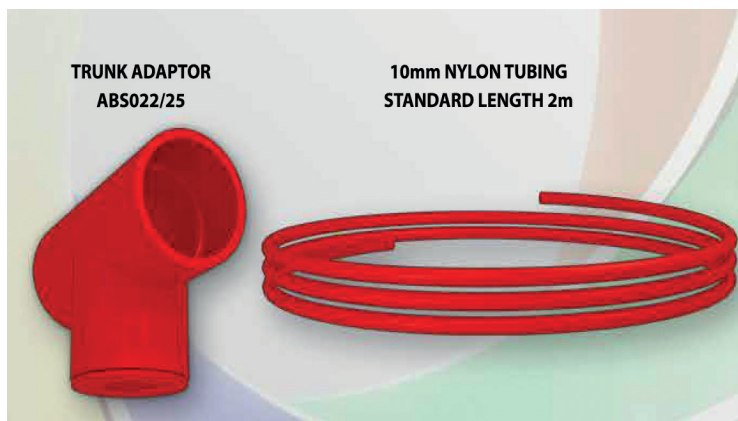
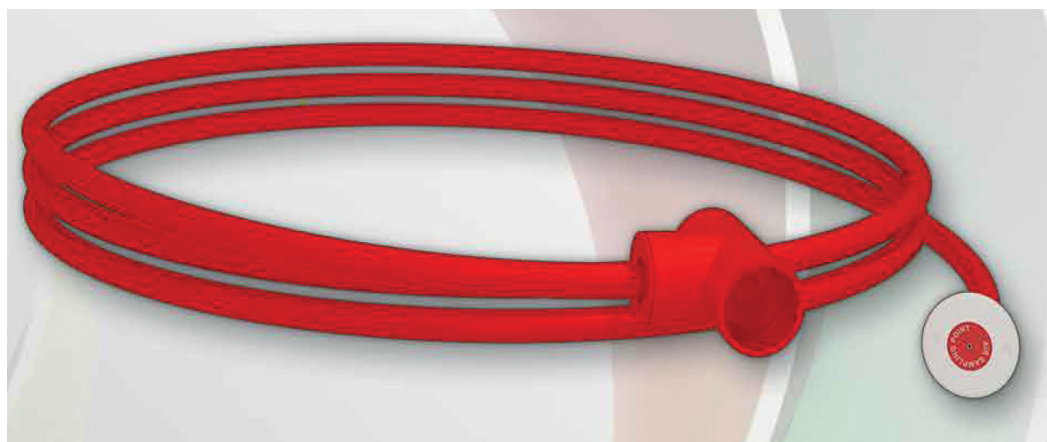
Installation Instructions:

Use the correct solvent Plusbond 3019. Do not paint. Keep pipe clean and free from dust. Do not install in direct sunlight. Only install with approved pipe. Do not use solvents to clean, only soapy water.

PART NO.:
PVC019F - 25

PIPE COLOUR:
Red

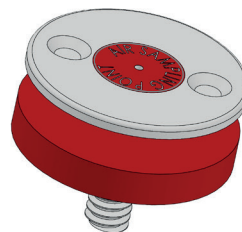
DIAMETER TOLERANCE:
+ / - 0.15mm



TRUNK ADAPTOR
ABS022/25

10mm NYLON TUBING
STANDARD LENGTH 2m

ABS019F/HO FLUSH HEAD
M16 Plastic NUT



RAW MATERIAL DATA

Physical

Specific Gravity:
Test Method ASTM D792

Melt Mass - Flow Rate (MFR)

200C/5.0Kg 2.6g/10 min
220C/10Kg 33g/10min
Test Method ASTM D1238

Moulding Shrinkage

Flow 0.0040 to 0.0070 in/in
Test Method ASTM D955

Mechanical

Tensile Strength
Yield 5510psi 0.118 in (3.00mm)
Tensile Elongation: 22%
Break 0.118 IN (3.00mm)
Test Method ASTM D638

Flexural Modulus

284000psi 0.236 in (6.00mm)
Test Method ASTM D790

Flexural Strength

8390psi 0.236 in (6.00mm)
Test Method ASTM D790

Impact

Notched IZOD Impact
73F (23C) 0.118 in (3.00mm)
4.6ft-lb/in
73F (23C) 0.236 in (6.00mm)
3.3ft-lb/in
Test Method ASTM D256

Hardness

Rockwell Hardness (R-Scale)
103
Test Method ASTM D785

Thermal

Deflection Temperature
Under Load 264psi (1.8 MPa)
Unannealed 181/83t
Viscal Softening Temperature
214/101t
Test Method ASTM D1525

Flamability

Flame Rating
0.0630 in 1.60mm HB
Test Method UL94

