

COMPRESSION ADAPTOR

(WHABS036 - 25mm)



This component is used where there is the requirement to reduce from 25mm pipe to a 10mm nylon tube to sample through a range of sampling heads. The 10mm tubing simply push fits and clicks into position, and can be released by pushing on the blue ring.

Installation Instructions:

Use the correct solvent Plusbond 3019. Do not paint. Keep pipe clean and free from dust. Do not install in direct sunlight. Only install with approved pipe. Do not use solvents to clean, only soapy water.

PART NO.:
WHABS036 - 25mm

PIPE COLOUR:
White

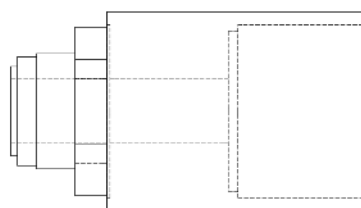
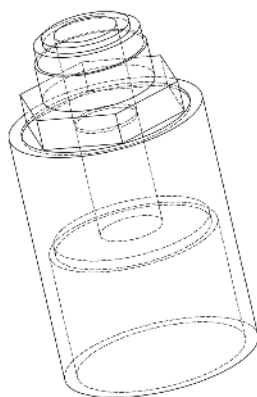
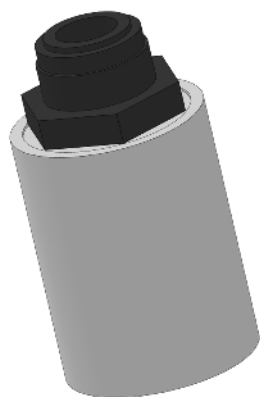
OPERATING TEMP:
- 40 c to 70 c'

WEIGHT:
23.2g

FITTINGS COLOUR:
White

DIAMETER TOLERANCE:
+ / - 0.15mm'

WALL THICKNESS:
2mm



Side Elevation

Front Elevation

