

# CAPILLARY TEE PIECE

(PVCGo22 - 25mm)



**BISSON**  
THE PIPE FITTINGS EXPERTS

Used to connect the aspirating pipe to 10mm OD flexible nylon tubing.

## Installation Instructions:

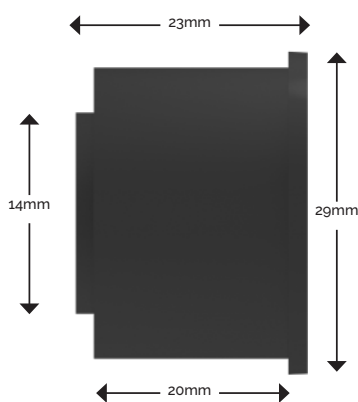
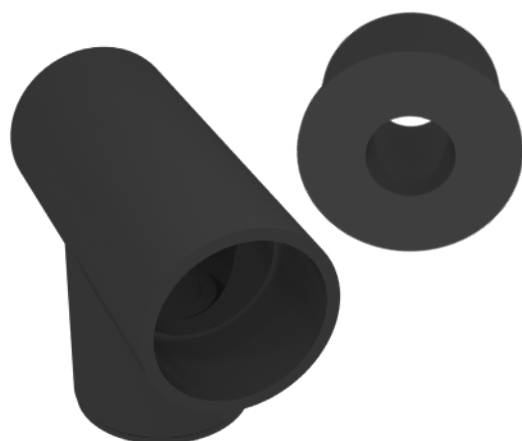
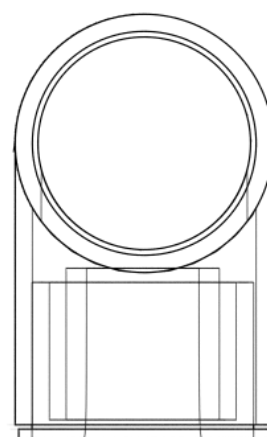
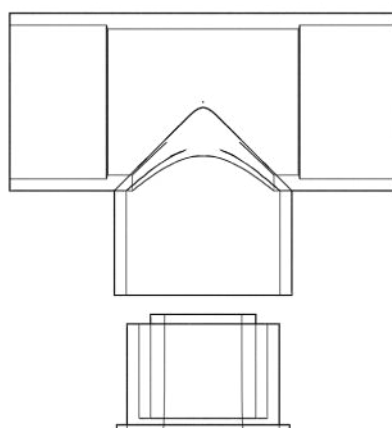
Use the correct solvent Plusbond 3019. Do not paint. Keep pipe clean and free from dust. Only install with approved pipe. Do not use solvents to clean, only soapy water.

**OPERATING  
TEMPERATURE:**  
-20°C to 50°C

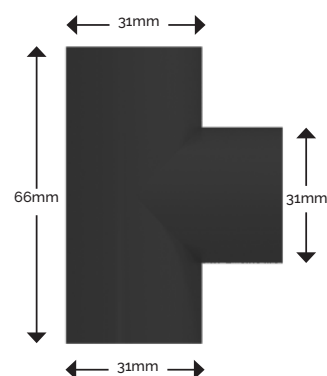
**PART NO.:**  
PVCGo22 - 25mm

**FITTING COLOR:**  
Grey

**DIAMETER TOLERANCE:**  
+/- 0.15mm



CAPILLARY ADAPTOR



TEE FRONT ELEVATION

